



ISSUE NO. 3 • AUTUMN • 2018
www.metropolitanhousing.org

METROPOLITAN
 HOUSING COALITION

Newsletter

P.O. Box 4533 Louisville, KY 40204-4533 • (502)584-6858 • info@metropolitanhousing.org

What's Inside

THE VICTORY
 NEWSLETTER!
Page 1

RUSSELL: A PLACE OF
 PROMISE
Page 2

LEARN MORE
 ABOUT VACANT
 AND ABANDONED
 PROPERTIES
Page 3

WHAT ELSE IS NEW OR
 IN THE NEWS?
Page 4

GIVE FOR GOOD
 LOUISVILLE A
 SUCCESS!
Page 5

COMMUNITY
 CALENDAR & OTHER
 ANNOUNCEMENTS
Page 7

THE VICTORY NEWSLETTER!



Celebrate the progress and the work of all our partners—together we have made great things happen! Every step of the way we have changed the conversation to always include fair housing and affordable housing goals. It can get tiring and the arc of housing justice is long—and the change we seek takes time. So take a minute to relish some of our successes:

- A Fair Housing Assessment is being used by Louisville Metro to assess the impact of projects.
- FOR THE FIRST TIME a whole section in the new Comprehensive Plan (formerly Cornerstone 2020) about housing includes fair housing and affordable housing as desired outcomes.
- The Louisville Metro government has, for the second year, allocated \$10,000,000 for affordable housing through the Louisville Affordable Housing Trust Fund.
- LHOME (Louisville Housing Opportunities and Micro-Enterprise) has been certified by the U.S. Department of the Treasury as a Community Development Financial Institution (CDFI), the first home grown CDFI in 20 years
- Louisville Metro Council self-initiates negotiations for affordable housing when a housing developer asks for a financial boon from the city.

All of this is due to your persistence and the persistence of all our allies and partners who focus on fair housing and affordable housing!

THANK YOU TO OUR MHC ANNUAL MEETING SPONSORS!



RUSSELL: A PLACE OF PROMISE

by Theresa Zawacki
Executive on Loan
Russell: A Place of Promise

Russell was once a vibrant and diverse hub of small, African American-owned businesses that served neighborhood needs, created jobs, and contributed to neighborhood resilience, and was a center of African American homeownership. Today, Russell's former vibrant business district is fragmented due to intentional past policy choices, including Redlining and Urban Renewal, and the lack of significant investment that followed.

The Russell community is poised to experience a neighborhood renaissance with nearly \$1 billion in planned and underway investment, including a \$35 million sports and learning complex anchored by an indoor track and field facility being developed by the Louisville Urban League; a \$30 million grant secured to redevelop Beecher Terrace, an aging public housing complex, for mixed income housing and amenities, leveraging an additional \$200 million in private investment; a new, \$130 million, headquarters for Passport Health Plan and a new \$35 million branch of the YMCA of Greater Louisville. The time is right for new strategies that focus on resident and business retention through wealth building and investment without displacement.

Russell: A Place of Promise is a multi-year initiative focused on community wealth building and social mobility for existing residents and businesses in Louisville's Russell Neighborhood. The initiative received a \$5 million seed grant from the William R. Kenan, Jr. Charitable Trust, and will be housed for up to five years within partner organizations Louisville Metro Government and Cities United before launching into a self-sufficient, community-based entity. Russell: A Place of Promise is fiscally sponsored by The Community Foundation of Louisville, a 501(c)(3) public charity, through its incubation stage.

The initiative's values include transparency with and accountability to Russell residents, the creation of opportunities for ownership of physical and intellectual assets, and the belief in the inherent talent, creativity and capacity that resides in Russell.

Russell: A Place of Promise's core areas of work include:

1. Community engagement and outreach to place residents at the forefront in developing the initiative's vision;
2. The redevelopment of property at 3025 W. Madison Street, directly across from the Urban League's planned sports complex, for a mixed use residential and commercial space to host cooperative and nontraditional businesses, and the development of new community gathering spaces;
3. Community outreach services to help Russell residents take advantage of existing and new opportunities in workforce development, education and health and support their participation in wealth creation initiatives.
4. Wealth creation through the establishment of construction loan pools, lines of credit and other financial tools to support new home owners in Russell; and,
5. Wealth creation through business development and ownership and the development of loan funds for business and franchise development in Russell.

Cities United will be hiring five full-time staff members to support community engagement and outreach efforts. Additional staff will be hired over the coming year to support other project activities. For more information about how to get involved with Russell: A Place of Promise, please contact Anthony Smith, Executive Director of Cities United, at info@citiesunited.org, or Theresa Zawacki, Executive on Loan to Russell: A Place of Promise, at Theresa.zawacki@louisvilleky.gov.



Photo courtesy of the Louisville Urban League

On August 28, 2018, the Louisville Urban League hosted and facilitated a discussion, "Stop! Don't Sell Yet!", led by Kevin Dunlap. Over 100 concerned Louisville residents turned out to discuss the proposed investments in Western Louisville neighborhoods that will change property values.

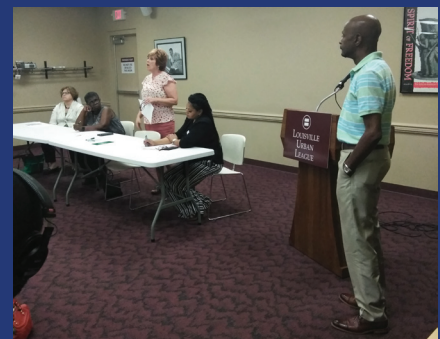


Photo courtesy of the Louisville Urban League

Learn More about Louisville Vacant and Abandoned Properties

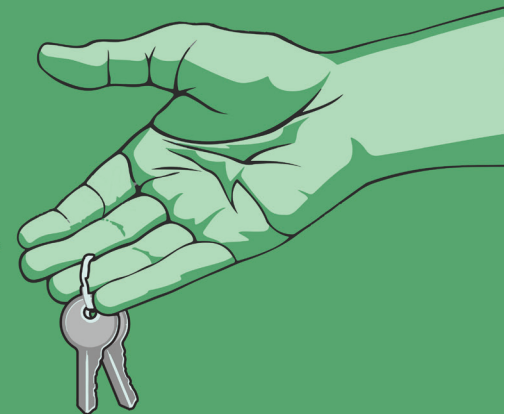
By Laura Grabowski
Develop Louisville



In July, Metro TV's 502 Report focused on Louisville Metro's efforts to combat vacant and abandoned properties. The program covered a variety of VAP-related issues, including a ride-along with the Office of Vacant and Public Property Administration's Real Estate Coordinators, an explanation of the Landbank Authority's sales programs, information designed to dispel myths about VAPs, and two examples of organizations repurposing vacant properties. Please check out the program at the following link on Youtube: https://www.youtube.com/watch?v=FFyfwPd_iDs. Share widely! For more information, please visit www.louisvilleky.gov/vacant.



Do you feel you've been
DISCRIMINATED AGAINST
in the housing market?



Visit MetropolitanHousing.org/Resources/PSAs to understand your rights.

Are you a MEMBER of the Metropolitan Housing Coalition?
Ask Tony at tony@metropolitanhousing.org

What Else is New or in the News?

by Cathy Hinko
MHC Executive Director

Kentucky Public Service Commission (PSC) Denies Advanced Metering Systems Request

The request brought by LG&E to the Kentucky Public Service Commission (PSC) for spending hundreds of millions of dollars on advanced electronic metering was denied. The Metropolitan Housing Coalition, represented by the Kentucky Resources Council, worked with the Kentucky Attorney General's office to analyze whether purported benefits justified the enormous expenditure. Basically, LG&E had to show a great need and a great benefit to justify the great cost. The PSC found that there had not been enough evidence to meet the criteria to impose such a huge cost on all of us.

MHC represented a constituency that would have suffered from increased expense without meaningful benefits. Many people pay 9% or more of their income for utilities and have little control over the energy efficiency of their rental units, which are in short supply, especially at affordable rents.

What is next? LG&E has given official notice of a utility rate case they will be filing in the next few weeks. Once again you can count on MHC to vigorously scrutinize information and fend off unnecessary increases. While MHC is focused on affordable housing for lower income households, our work in this area is a benefit to every household paying LG&E for utilities.

MHC Files Title VI Civil Right Act Complaint Against Metropolitan Planning Organization

At a hearing held by the federal Department of Transportation on the process for distributing the federal transportation funds, MHC filed a Title VI Civil Rights Act complaint against our metro area decision-making body. The Metropolitan Planning Organization (MPO) that covers the Louisville area, known as the Transportation Policy Committee, and KIPDA have deliberately excluded representation and resources based on race.

The five counties of the MPO are Jefferson, Oldham, Bullitt, Clark and Floyd. Of the 1,111,863 people in those five counties, Jefferson County has 771,158. Therefore, Jefferson County is the most heavily populated area.

Jefferson County's Black population is 213,611 people out of the total Black population of 233,476 as all of the other counties are over 88% white. Jefferson County's Black population is almost as large as the TOTAL populations of Bullitt, Oldham and Floyd Counties put together. Yet each of these counties get a full vote as well as smaller cities in Jefferson County, such as Jeffersontown which has 27,305 people of whom 12% are Black, get one vote.

Louisville gets one vote despite being 771,158 people; most of the 213,611 Black people are included in that one vote. Jeffersontown is also included in that one vote as well as its own vote. It is not difficult math to see how disenfranchised the Black population is in deciding how to spend transportation dollars. It is as close to the laws that required Black voters to count jellybeans in a jar to get to vote. It is as racially ugly as it gets.

No surprise that transportation policies and expenditures have disproportionately excluded the needs of Black households. Further, decades long policies of holding MPO business and full meetings at a day, time, and place that do not allow people who work in the day and/or use public transit to attend have deliberately excluded participation at those meetings. That is why you have probably never heard of the entity that allocates hundreds of millions of dollars, including what gets allocated to TARC. They have been hidden from you.

If the meetings of the MPO were held tomorrow, you would need to leave by bus from downtown Louisville (with the best connections) at 7:00 a.m. and wait until the 12:30 or 1:00 p.m. meeting. To get home would be equally inconvenient.

Yet we know that policies that affect transit users transportation have a disparate impact by race. It also has a disparate impact by being a person with a disability.

Thousands participated in Move Louisville, so we know people in Louisville are interested in the future of transportation. When minorities are excluded, usually it means a lot of us are excluded. MHC will let you know the outcome of the complaint.

Stay informed about fair and affordable housing issues!

Join MHC on Facebook and Twitter:

[facebook.com/mhclouisville](https://www.facebook.com/mhclouisville)

twitter.com/mhclouisville



Thank You For Making MHC's 2018 Give For Good Louisville Campaign a SUCCESS!

Total Raised: \$5,740 (+ Bonus Pool \$)
of Unique Donors: 79

Together we accessed ALL three tiers of bonus pool funds!
AND
Together we met our \$6,000 goal!

STAY TUNED TO THE OCTOBER eNEWSLETTER FOR THE GRAND TOTAL!

Do you feel you've been discriminated against in the housing market?

Know your rights.



Visit MetropolitanHousing.org/Resources/PSAs to learn more.



DO YOU HAVE A SELFIE WITH A TARC BUS AD?

Send it to MHC:

tony@metropolitanhousing.org

Download 15 years of State of Metropolitan Housing Reports and other reports for FREE at our Website:
www.metropolitanhousing.org/resources/mhc-reports

Closure of Sherman Minton Bridge or Lane Closure? WE NEED YOUR INPUT!

The toll free Sherman Minton Bridge is having substantial, much-needed work done starting in 2021. But it is yet to be decided as to whether it is closed all together or if there are lane closures. Innovative ideas of how to lessen the harm to residents are welcome. This bridge is a necessary lifeline, and the most popular of all the bridges. The impact of how we do this can be devastating.

There are *two public meetings* coming up about planning for how to do the construction and minimize disruption:

Tuesday, October 2 at the Scribner Middle School in New Albany, IN, 910 Old Vincennes Road
5:30 - 7:00 P.M (presentation at 6:00 P.M.)*

Thursday October 4 at the Chestnut Street YMCA, 930 West Chestnut Street, Louisville, KY
5:30 - 7:00 P.M (presentation at 6:00 P.M.)*

Just to let you know the importance of this, here are the current number for each bridge:

Toll Free Bridges

Sherman Minton: 90,000 vehicles per day (up substantially since tolls instituted)
2nd Street Bridge: 45,000 vehicles per day (up substantially since tolls instituted)

Tolled Bridges

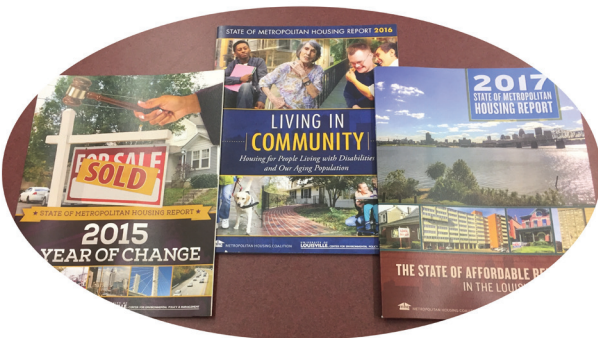
I-65 Lincoln/Kennedy: 64,000 vehicles per day
I-265 East End Bridge: 21,000 vehicles per day

***If the meeting dates have passed, stay tuned for additional meeting announcements. We will send out further info!**

SAVE THE DATE

November 14, 2018

Stay tuned for further
details on the release of the
*2018 State of Metropolitan
Housing Report!*



Subscribe to our newsletter electronically and read it on your phone or tablet!
<http://www.metropolitanhousing.org/resources/newsletters>

COMMUNITY CALENDAR

Louisville Fair Housing Coalition

Meets each 2nd Tuesday at 2pm at New Directions (1000 E. Liberty St., Louisville, KY 40204).

Louisville Vacant Property Campaign

Meets each 3rd Tuesday at 5:30pm, now at the Western Branch of the Louisville Free Public Library at 10th & Chestnut (604 S. 10th St., Louisville, KY 40203).

Annual Kentucky Hispanic, Immigrant & Refugee Networking Summit

Hosted by the Kentucky Commission on Human Rights on October 11, 2018 at the Shelby County UK Cooperative Extension Office located at 117 Frankfort Road, Shelbyville, Kentucky from 9:00AM to 3:30PM. Registration is free. RSVP with all contact information to Juan Peña at juan.pena@ky.gov.

Spalding University School of Social Work Information Sessions

Spalding University is holding information sessions for their BSW and MSW programs on October 23, 2018 from 5:00-6:00 pm at the Republic Academic Center (4th Floor) located at 981 S. 3rd St.

“Patients Not Profits: Improved Medicare for All” - Dr. Margaret Flowers

Thursday, October 4th from 7:00 - 9:30 P.M. at Hotel Louisville located at 120 W. Broadway, Louisville, Ky. 40202. FREE PUBLIC LECTURE. Sponsored by Kentuckians for Single Payer Health Care & Physicians for a National Health Program-KY. Contact the sponsors for more information at (502) 636 1551 or nursenpo@aol.com.

OTHER ANNOUNCEMENTS

Kentuckians for the Commonwealth is HIRING!

Visit <http://kftc.org/about-us/kftc-jobs> for more information on open position and how to apply.

5/3 Home Owner's Loan Assistance Program (HOLAP)

If you or your organization are prepared to contribute to our efforts or interested in more information, please contact Tonya Montgomery or Christie McCravy at 502-637-5372.

LHOME IS LENDING!

For more information contact Amy Shir at ashir@lhomeky.org or (502) 882-8091.

DONATE TODAY!

Strengthen the United Voice for Fair & Affordable Housing!

Make your donation online at www.metropolitanhousing.org or mail this form to MHC, P.O. Box 4533, Louisville, KY 40204-4533.

Name(s) _____

Address _____

City/State/Zip _____

Phone _____ E-mail _____

Membership Type (check one) _____ Individual/Family _____ Organization/Business

Membership Level

_____ Sponsoring Member - \$1,000 or more

_____ Supporting Member - \$75-\$199

_____ Sustaining Member - \$500-\$999

_____ Assisting Member - \$1-\$74

_____ Anchoring Member - \$200-\$499

_____ Check here if you would like your donation to be anonymous

_____ One-Time Donation Amount \$ _____

Recurring Credit Card Donation Amount \$ _____ per month OR \$ _____ per quarter

Method of Payment (check one): _____ Check _____ Visa _____ MC _____ Amex _____ Discover

Credit Card Number _____ Expiration Date (month/year) _____ / _____



MHC would like to thank Louisville Metro Government for its continuing support of our outreach efforts.



Return Service Requested
MHC's Monthly Newsletter is underwritten by a generous grant from

METROPOLITAN HOUSING COALITION
P.O. Box 4533 Louisville, KY 40204-4533
TEL: (502) 584-6858
FAX: (502) 452-6718
EMAIL: info@metropolitanhousing.org
WEB: www.metropolitanhousing.org
FACEBOOK: [facebook.com/mhclouisville](https://www.facebook.com/mhclouisville)
TWITTER: twitter.com/mhclouisville
YOUTUBE: <https://goo.gl/EHHHML>



Non-Profit Org.
US Postage
PAID
Louisville, KY
Permit No.
1878